

# The History of St Marylebone in 100 Objects

*Old Philologists:*

*One Case, Many Voices*



Philological School Crest

The exhibition was curated by the Heritage group at St Marylebone Parish Church. It is on display from March to the end of August 2026



## The History of St Marylebone in 100 Objects

### Old Philologists: One Case, Many Voices

Founded by the Philologists Institute in 1760, the Marylebone Philologists Society is a charitable organization dedicated to the study and preservation of the history of the area.

Even though the case has a simple design, it is a masterpiece of craftsmanship, made from the finest materials and finished with a beautiful patina.

Created by a local artist, the case is a perfect blend of history and art, and is a true work of art in itself.



As a first anniversary, the school opened a series of exhibits to celebrate its history, and the case is a perfect example of the school's commitment to its heritage.

The case is a beautiful example of the school's commitment to its heritage, and is a true work of art in itself.

Created by a local artist, the case is a perfect blend of history and art, and is a true work of art in itself.



The exhibition comprises a display case and, alongside, a tablet displaying a slideshow of photos



# *Old Philologists: One Case, Many Voices*

Founded by the Philological Society in 1792 on Mary Street to educate boys from disadvantaged backgrounds, St Marylebone Grammar School later made its home on Marylebone Road, shaping generations of boys for over a century.

Even though this case traces a single school's past, the curiosity, adventure, and challenges portrayed will strike a chord with anyone who remembers the rhythms of school life.



and performed for an audience of peers.



Creativity and self-expression were an integral part of school life. Plays, concerts and exhibitions promoted imagination, talent and ambition. Production pamphlets and photos, such as those displayed, reveal how students explored new roles and performed for an audience of peers.



SOUTH RIDLEY STREET

Plan of the Parish of St. Marylebone, in the County of Middlesex, as it appeared in the year 1793.



ST MARYLEBON  
GRAMMAR SCHOOL

THE SCHOOL PLAY

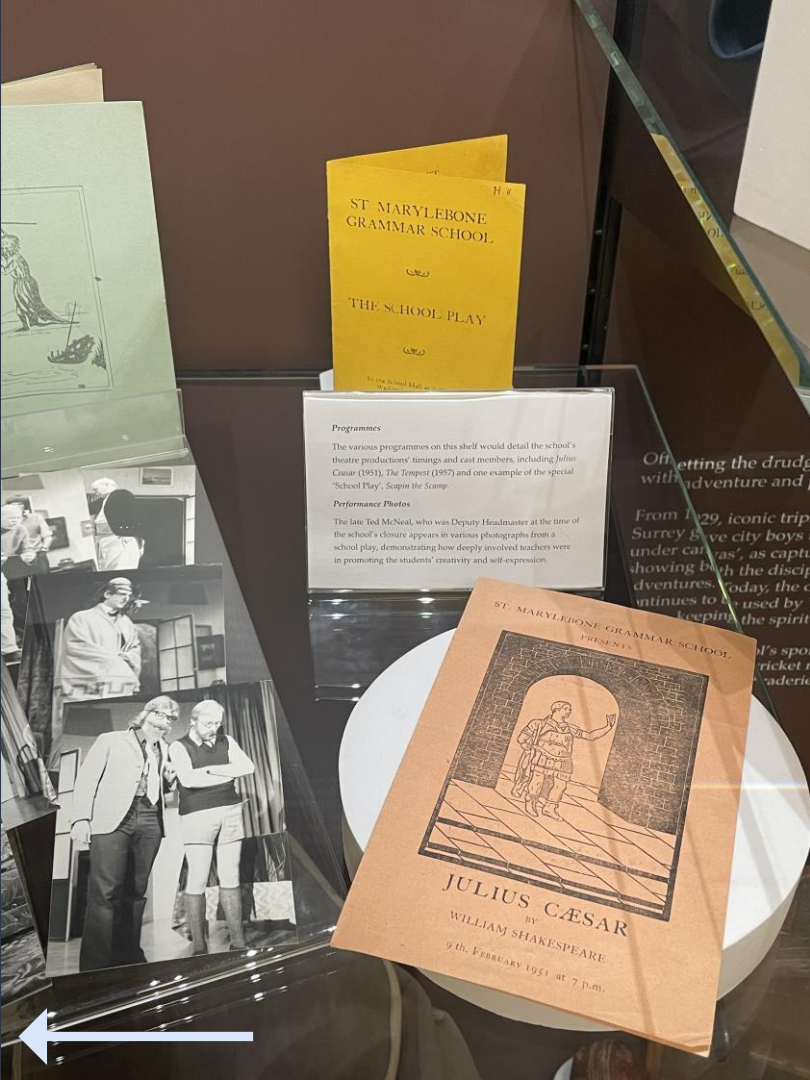
*Programmes*

The various programmes on theatrical productions' (images and programmes) (1951), *The Tempest* (1957) in 'School Play', *Scopin the Scamp*.

*Performance Photos*

The late Ted McNeal, who was Deputy Headmaster, appears in various school play, demonstrating how dedicated he was in promoting the students' creativity.

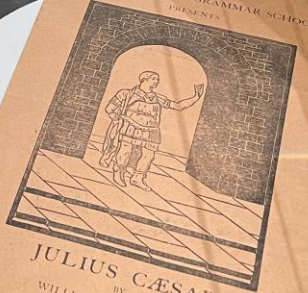


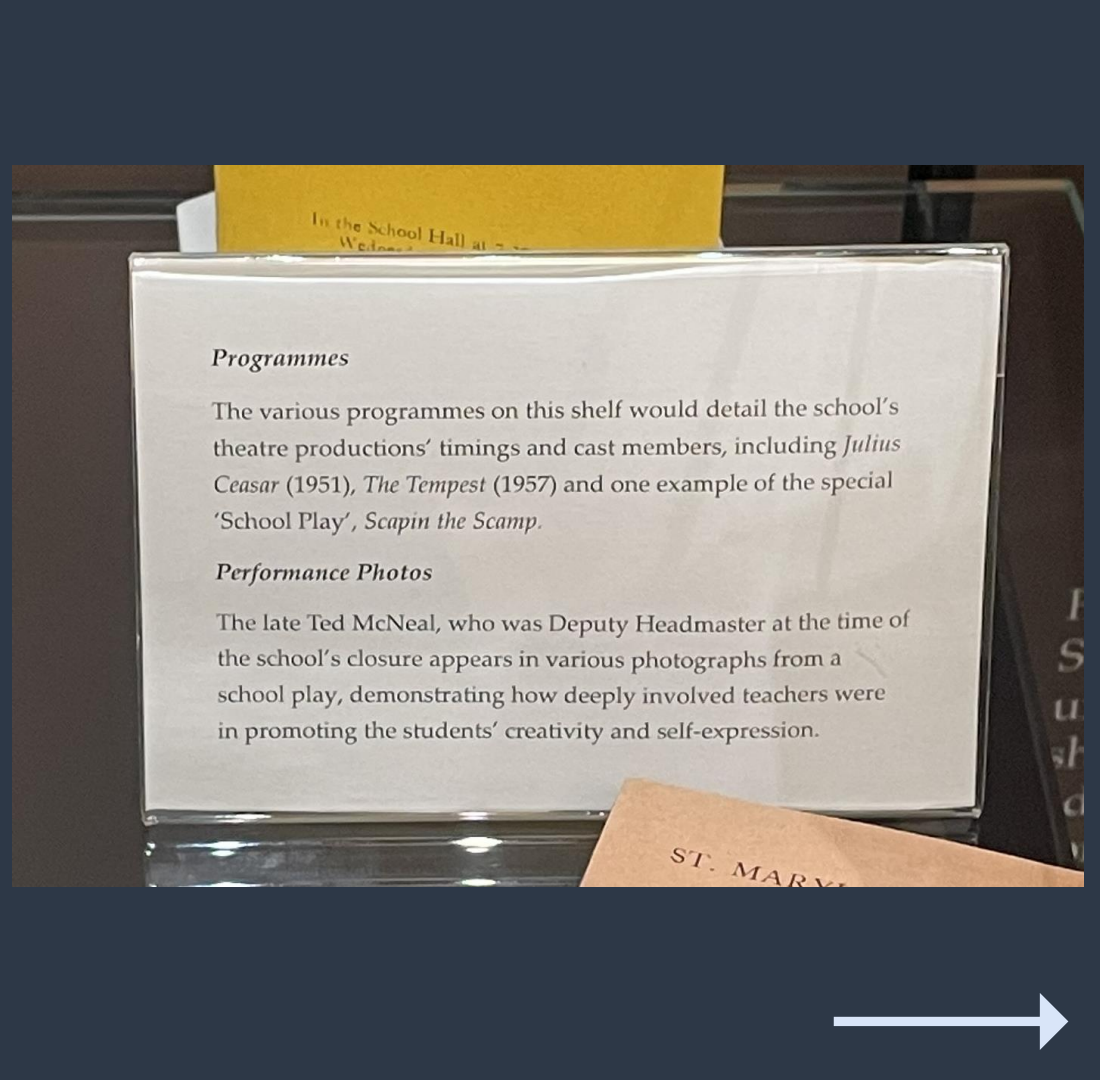


ST. MARYLEBONE GRAMMAR SCHOOL  
THE SCHOOL PLAY

**Programmes**  
The various programmes on this shelf would detail the school's theatre productions' timings and cast members, including *Julius Caesar* (1951), *The Tempest* (1957) and one example of the special 'School Play', *Scapin the Scamp*.

**Performance Photos**  
The late Ted McNeal, who was Deputy Headmaster at the time of the school's closure appears in various photographs from a school play, demonstrating how deeply involved teachers were in promoting the students' creativity and self-expression.

ST. MARYLEBONE GRAMMAR SCHOOL PRESENTS  
  
JULIUS CÆSAR  
BY WILLIAM SHAKESPEARE  
9th FEBRUARY 1951 at 7 p.m.



### Programmes

The various programmes on this shelf would detail the school's theatre productions' timings and cast members, including *Julius Caesar* (1951), *The Tempest* (1957) and one example of the special 'School Play', *Scapin the Scamp*.

### Performance Photos

The late Ted McNeal, who was Deputy Headmaster at the time of the school's closure appears in various photographs from a school play, demonstrating how deeply involved teachers were in promoting the students' creativity and self-expression.

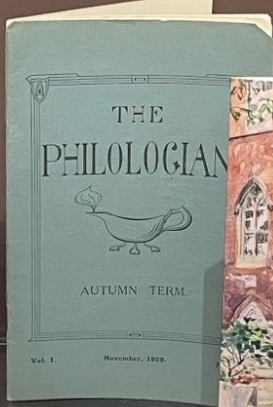
ST. MARYLEBONE GRAMMAR SCHOOL

ambition.  
os, such as those  
explored new roles  
of peers.

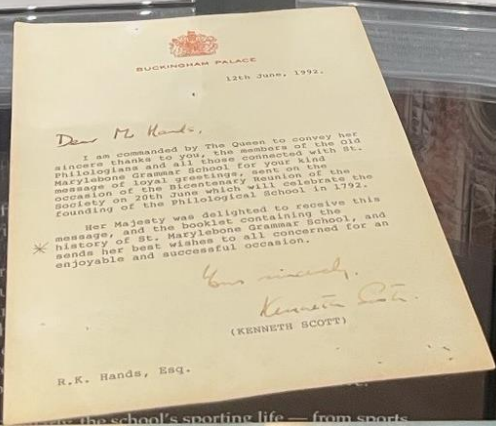


**Colours' Tie**  
The special tie embroidered (or was given to students who were awarded 'Colours' - recognition for representing the school in sports or achieving another notable accomplishment).

**Cricket Cap**  
Also embroidered with the school's beehive emblem, this cap was worn by members of the cricket team, linking sporting success with a shared school identity.



**Letter from the Queen**  
This letter from 1992 conveyed the Queen's sincere thanks for the Old Philologists' loyal greetings with regard to the Bicentenary Reunion of the Society, which celebrated 200 years of the founding of the Philological School.  
Date: 12<sup>th</sup> June, 1992

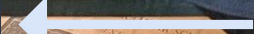


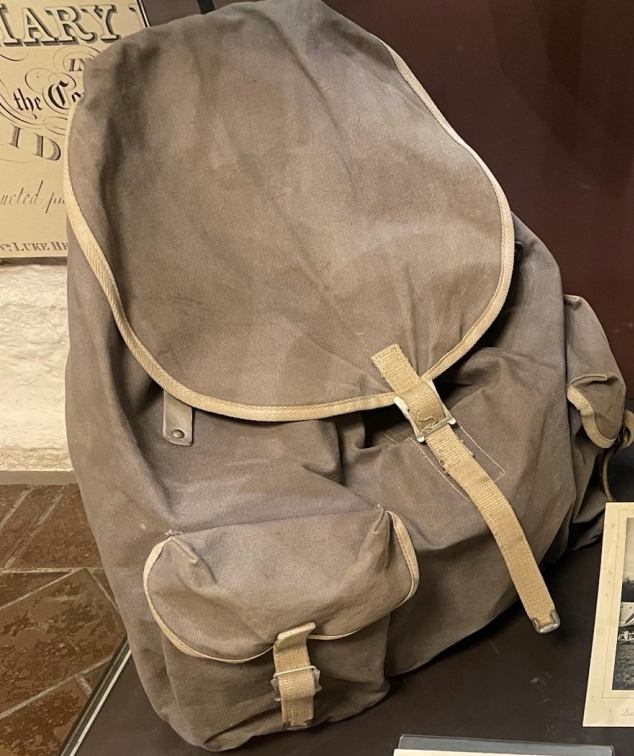
At its heart is community. The school fostered a sense of belonging through shared routines, rituals and friendships that lasted beyond the classroom.

The symbols of a beehive and bees adorn the hat, tie, badge and school crest, reminding us of the values of cooperation and mutual support which the school sought to inspire.

Letters, such as one from Buckingham Palace, capture the wider connections the community nurtured, and newsletters reveal how the school kept students, staff and families connected.

teamwork and camaraderie, which stayed long after the final whistle.





**Phoenix Trophy**  
The Phoenix Trophy was donated by the three parent forms of the 1st and 2nd Years, Hawks, Ravens and Swans. Each team, made up of 30 boys, competed throughout the year in rugby, cricket, cross-country, athletics, swimming and other activities.  
Date: From 1959-1969



**Rugby 1st XV**  
Inter-school competition was central to sporting life at St. Marylebone, with this annotated fixture card showing scheduled matches against other grammar schools including Haberdashers' Crammer and William Ellis.  
Date: 1950-51

**Rugby Team Photo**  
Photos of sports teams, such as the Rugby 1st XV, capture the school's pride and honour in the boys' sporting abilities, and the strong teamwork necessary for success on the pitch.  
Date: 1971-72



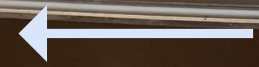
**Images from Forest Green**  
Views of tents, the old Mill building and snapshots of campsite prancing discipline and laughter capture Forest Green in quiet moments of serene woodland. Marylebone's idyllic forest photographs, and a brief glimpse of Forest Green, can be seen on the accompanying album.

DATE	VENUE	OPPONENT	RESULT	SCORERS
1950-51	St. Marylebone	St. Marylebone	W	
1951-52	St. Marylebone	St. Marylebone	W	
1952-53	St. Marylebone	St. Marylebone	W	
1953-54	St. Marylebone	St. Marylebone	W	
1954-55	St. Marylebone	St. Marylebone	W	
1955-56	St. Marylebone	St. Marylebone	W	
1956-57	St. Marylebone	St. Marylebone	W	
1957-58	St. Marylebone	St. Marylebone	W	
1958-59	St. Marylebone	St. Marylebone	W	
1959-60	St. Marylebone	St. Marylebone	W	
1960-61	St. Marylebone	St. Marylebone	W	
1961-62	St. Marylebone	St. Marylebone	W	
1962-63	St. Marylebone	St. Marylebone	W	
1963-64	St. Marylebone	St. Marylebone	W	
1964-65	St. Marylebone	St. Marylebone	W	
1965-66	St. Marylebone	St. Marylebone	W	
1966-67	St. Marylebone	St. Marylebone	W	
1967-68	St. Marylebone	St. Marylebone	W	
1968-69	St. Marylebone	St. Marylebone	W	
1969-70	St. Marylebone	St. Marylebone	W	
1970-71	St. Marylebone	St. Marylebone	W	
1971-72	St. Marylebone	St. Marylebone	W	

Offsetting the drudgery of everyday schoolwork with adventure and play was essential.

From 1929, iconic trips to Forest Green camp in Surrey gave city boys the chance to experience 'life under canvas', as captured by photos over the years, showing both the discipline and joyful chaos of their adventures. Today, the camp, known as 'The Mill', continues to be used by William Ellis School, among others, keeping the spirit of those trips alive.

Similarly, the school's sporting life — from sports days to rugby and cricket matches — fostered teamwork and camaraderie, which stayed long after the final whistle.



## Phoenix Trophy

The Phoenix Trophy was contested by the three junior forms of the 1st and 2nd Years - Hawks, Ravens and Skuas. Each form, made up of 30 boys, competed throughout the year in rugby, cricket, cross-country, athletics, swimming and other activities.

Date: From 1955-1969



### Phoenix Trophy

The Phoenix Trophy was contested by the three junior forms of the 1st and 2nd Years - Hawks, Ravens and Skuas. Each form, made up of 30 boys, competed throughout the year in rugby, cricket, cross-country, athletics, swimming and other activities.

Date: From 1955-1969



School Camp 1965.





*Phoenix Trophy*

The Phoenix Trophy was contested by the three junior forms of the 1st and 2nd Years - Hawks, Ravens and Skuas. Each form, made up of 30 boys, competed throughout the year in rugby, cricket, cross-country, athletics, swimming and other activities.

Date: From 1955-1969



*School Camp 1965.*





Camp 1965.



### Rugby Fixtures

Inter-school competition was central to sporting life at St Marylebone, with this annotated fixture card showing scheduled matches against other grammar schools including Kilburn Grammar and William Ellis.

Date: 1950-51

### Rugby Team Photo

Photos of sports teams, such as the Rugby 1<sup>st</sup> XV, capture the school's pride and honour in the boys' sporting abilities, and the strong teamwork necessary for success on the pitch!

Date: 1971-72

DATE	1st XV	2nd XV	COLTS XV	3rd & U.14 XV's
Sat. 30 Sep.	Thames Valley	A	Thames Valley	H
" 7 Oct.	High Wycombe	A	High Wycombe	A
" 14 "	Thames Valley	H	High Wycombe	A
" 28 "	Baling County	A	Thames Valley	A
" 4 Nov.	Kilburn Grammar	H	Kilburn Grammar	A
" 11 "	St. Ignatius	H	St. Ignatius	A
Wed. 15 "	Tottenham Gram.*	H	Tottenham Gram.*	A
Est. 18 "	Weybridge	H	Weybridge	A
" 25 "	St. Olaves	A	St. Olaves	H
" 2 Dec.	Harrow County	A	Harrow County	H
" 9 "				
" 16 "	Old Philologists*	H	Chiswick C.S.	H
" 13 Jan.	Kilburn Grammar	A	Kilburn Grammar	H
" 20 "	William Ellis	H	William Ellis	A
" 27 "	Sonsnet Gypsy*	H	William Ellis	A
" 3 Feb.	Tiffin School	A	Tiffin School	H
Wed. 7 "	Tottenham Gram.*	H	Tottenham Gram.*	H
Est. 17 "	St. Olaves	H	St. Olaves	H
" 3 Mar.	William Ellis	A	William Ellis	H
" 10 "	Harrow County	H	Harrow County	A
" 24 "	St. Mary's 'B'*	H		

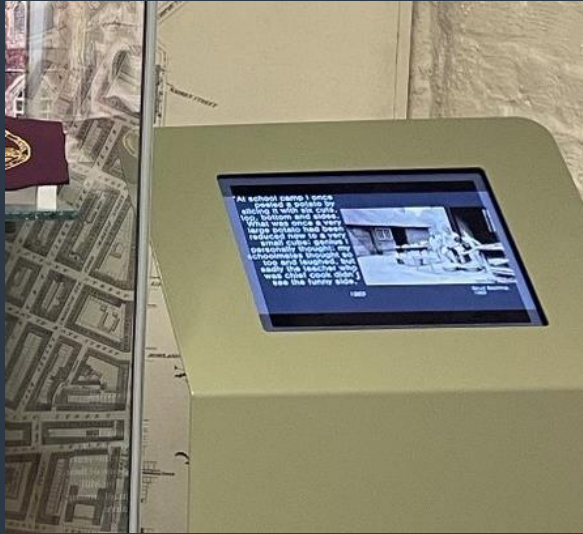
\* 2.30 p.m. start



### *Images from Forest Green*

Rows of tents, the old Mill building and snapshots of camp-life portraying discipline and laughter capture Forest Green as generations of boys would have known it. Many more photographs, and a short videoclip of Forest Green, can be seen on the accompanying tablet.





The following pages are from the slideshow on the tablet next to the display case...





ST. MARYLEBONE GRAMMAR SCHOOL



June, 1942.

*Pearson Ltd*  
London, W.C.1



ST. MARYLEBONE GRAMMAR SCHOOL



May, 1952.

*Pearson Ltd*  
30 Eagle Street,  
London, W.C.1



ST. MARYLEBONE  
GRAMMAR SCHOOL  
APRIL 1961



**BUCHANAN**

Cohorts of students came and went.



Cohorts of students came and went.

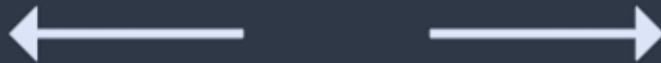
Hundreds of faces passed through the school's doors.



Cohorts of students came and went.

Hundreds of faces passed through the school's doors.

But the spirit and memories of the Old Philologists live on.



This digital display shares memories of former pupils of St Marylebone Grammar School.

Here you will find photographs from the Old Philologians Archive and personal collections, alongside reflections from those who once walked the school's corridors.

Together these images and voices offer a glimpse into school life and the friendships, traditions, and experiences that shaped generations of Philologians.

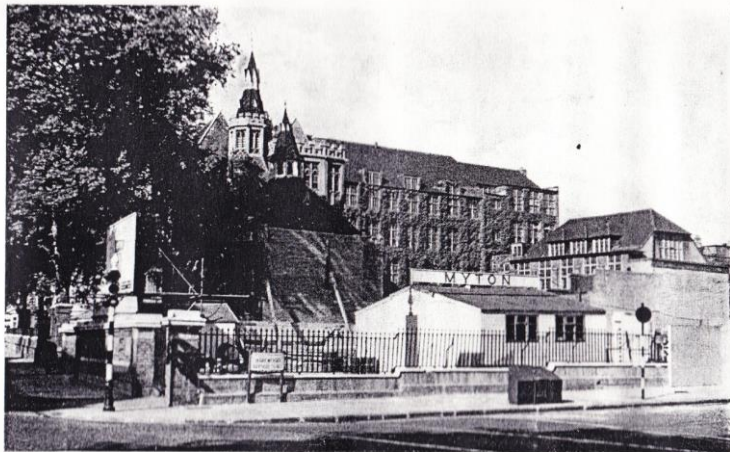


---

*Produced with the support of  
the Old Philologists  
Association, with special  
thanks to Ray Smith and  
Omar Harmon for their  
contributions to this  
exhibition.*

---





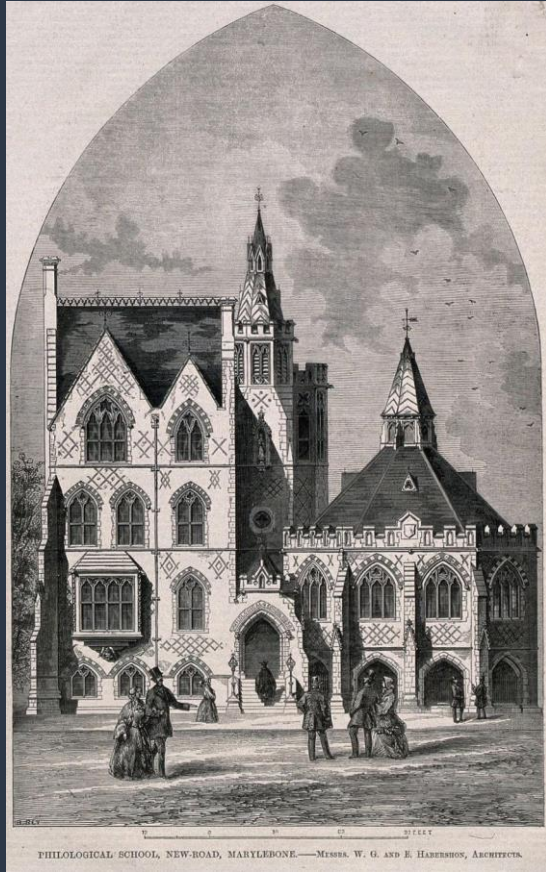
A VIEW UNLIKELY TO BE SEEN AGAIN



A VIEW OF THE SCHOOL DURING DEMOLITION OF ADJACENT SITE

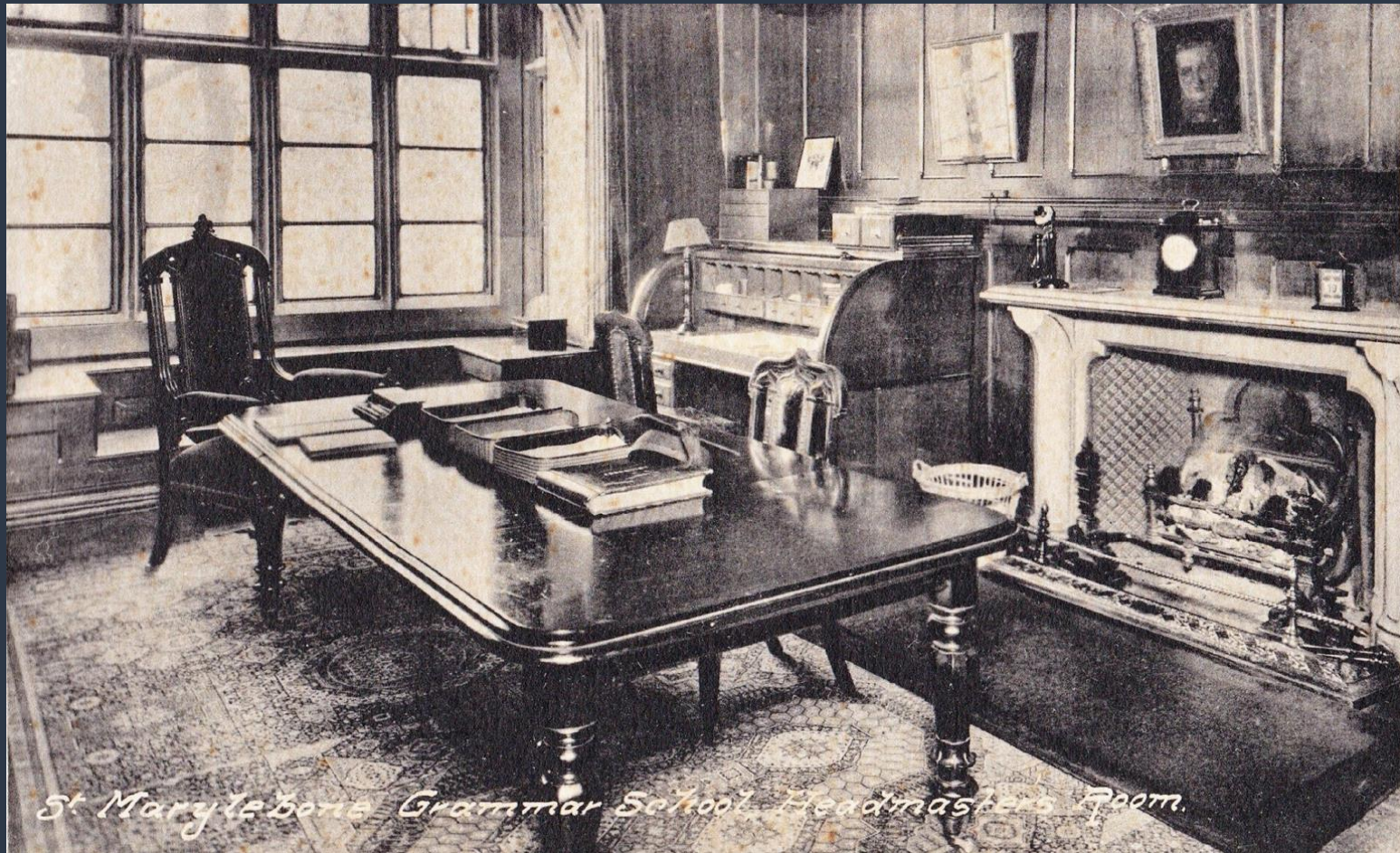
The school captured from  
the outside, in the 1960s





School engravings from 1857, after the school had moved from Mary Street (now known as Stanhope Street) in 1827 to its premises on 'New Road', now Marylebone Road





*St. Marylebone Grammar School, Headmaster's Room.*



Headmaster's Study, up to  
1970

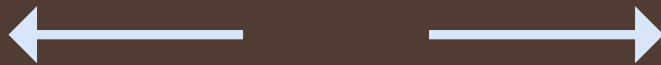
“After I applied to SMGS, I had an interview with headmaster Llewellyn Smith. It consisted of an English comprehension test and a history test. I’ll never forget that when Llewellyn Smith briefly went out of the room, my Dad told me the answer to one of the English questions! He got it right too!”

*1968*



“When I was waiting for my interview in the library, an older boy came over to me, which I dreaded, saw that I was here for an interview and said, ‘good luck’. I thought ‘there’s a boy saying nice things to me’. A real shock! I thought ‘I want to come here’.”

1973



# The School Library, late 1960s

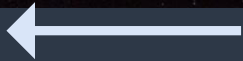


On display, the Honours Boards and Philological School Crest





Stained Glass Window  
in the School Library





THERE IS  
ONE GREAT SOCIETY

ALONE ON EARTH.  
THE NOBLE LIVING  
AND THE NOBLE  
DEAD.

WORDSWORTH



THE FORM OF THE MIND  
IS EVERLASTING.  
AND MAY BEST BE PRE-

SERVED AND REPRODUCED  
IN THE CHARACTER OF  
OTHERS.

THE NOBLEST OF ALL SEP-  
ULCHRES, A MEMORIAL IN

THE MINDS OF MEN.  
from THUCYDIDES



MEN MUST  
ENDURE THEIR GO-

ING HENCE, EVEN  
AS THEIR COMING  
HITHER. WISENESS  
IS ALL.

SHAKESPEARE



1910





1910

1960



1970



1910





1975

1970

0



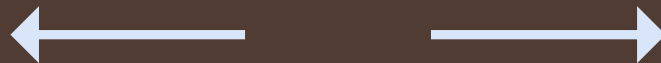
“SMGS pupils had incredibly diverse backgrounds. By 1973 there were many races and nationalities. I expected some racist bullying when I joined, but it was fantastic, there was none.”

*1973*



One of the most memorable parts of school life is its teachers.

For many Old Boys, the influence of a good teacher lasted far beyond their school years.



“Our beloved French teacher, Rory Hands, gave us all nicknames. Very un-PC, but fun. I was called cheval because of my facial resemblance to that animal and my friend, Gerald Rothman, who had a croaky singing voice was grenouille.”

*1950*



“Our Latin teacher gave us all Latin names. I'm afraid that I can't remember his name. We only spoke Latin in his class. I never heard him speak a word of English.”

*1949*





School Masters, 1880

School Teachers, 1976



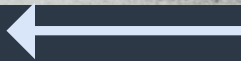
# The Camp at Forest Green

1965

*The Mill building*



1975



OCKLEY

*"Schoolboy  
Builders!"*

Boys from the  
St. Marylebone Grammar  
School — during Camping  
holiday — help to build  
their own Bathing Pool.

© BRITISH PATHÉ

*Pathé  
Super  
Gazette*

*Boys  
digging the  
swimming  
pool at  
Forest  
Green in  
1930*



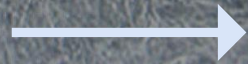




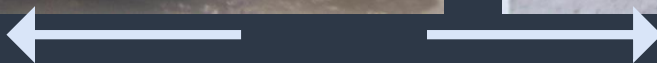








# Balancing duties and fun at the camp – 1965



“Those weeks at camp  
forged special relationships  
between staff and boys  
which carried over into the  
classrooms enhancing our  
learning.  
I owe a lot to those weeks.”

*1951*



“During my last summer camp in June 1951, the swimming pool was emptied and my form 5Sc, together with boys from VI Sc spent the full week hand mixing and laying a two-inch-thick fine concrete screed over the base.”

*1951*



“At school camp I once peeled a potato by slicing it with six cuts, top, bottom and sides. What was once a very large potato had been reduced now to a very small cube; genius I personally thought; my schoolmates thought so too and laughed, but sadly the teacher who was chief cook didn't see the funny side.”

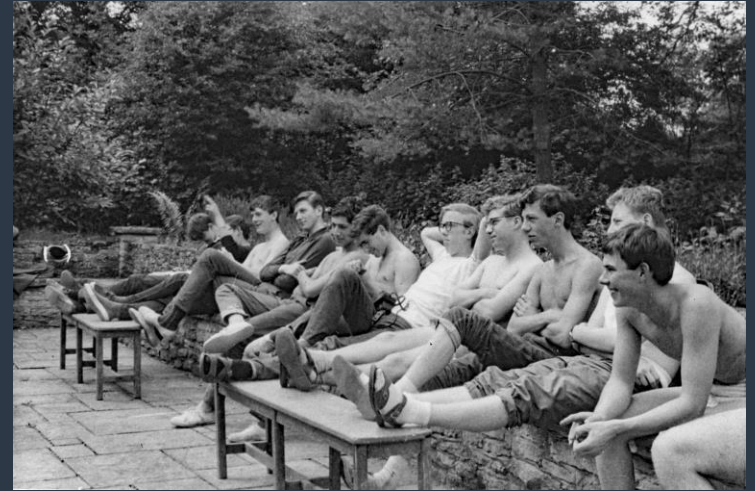
1969



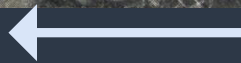
*Spud Bashing, 1963*



Resting by the Phillip Wayne (Former Headmaster) Memorial Fountain



and the Memorial Garden





Waiting for the bus back, 1975



Dick Charon, 1st leg relay for Westminster Schools at Crystal Palace, 1967

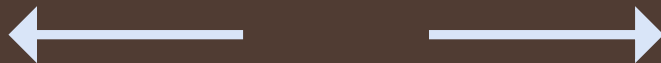


Senior 100-yard race, 1971



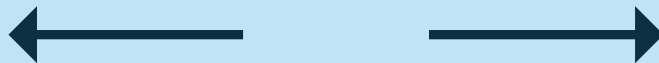
“Gym homework!” said Mr Bosley at the end of 1H’s first gym lesson of the Autumn Term in 1968. We couldn’t believe our 11-year-old ears. “When you get home today, stand in front of a mirror and *GROWL!*”

1968



“My brother, Jeremy, was the distance running, track star. I was proud of him but couldn’t emulate as I suffered from asthma. Then one day I came 13th out of 75. The great Colin Bosley said ‘I’m proud of you, McCarthy!’ Respect from a caring teacher!”

*1970*





Sports Day winner awarded trophy by Mrs Spiers and George Hartshorn, 1968



“Sailed through at SMGS without leaving a mark on the sides except I won a swimming race once.”

*1949–57*



1<sup>ST</sup> XV, 1969–1970



Rugby 7s Team, 1974



*Among other productions*

*The Devil's Disciple*



*The Government Inspector*



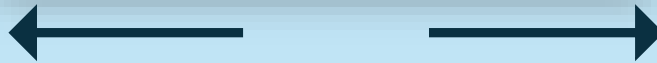
“Mr Cox, Head of English, produced the play Volpone in 1979. For the first time ever, he organised three girls from Camden School for Girls to join us. With girls coming into a boys school, they received a great deal of attention. This may well have resulted in a few extra volunteers from the boys to take part!”

*1979*





From a production  
of *'Othello, the Moor  
of Venice'*



## A Concert Programme

### A Programme of Readings and Music

1. 'Preludes' by T.S. Eliot read by S. Kimmel }  
A. Lewis } 3S  
D. Perkins }  
H. Coster }
2. Trumpet Solo: Handel's March from 'Scipio' played by Thompson (1R)
3. 'The Farmer's Boy' by John Clare read by A. Landes (2H)
4. L. Gluckstein (2H) reads his own poem 'Time'
5. P. Cohen (2H) reads his own poem 'The Jungle'
6. Piano Solo: Telemann's 'Allemande' played by Economides
7. 'The Eagle' by T.W. Cmoaland read by C. Hewitt (1H)
8. 'When Icicles Hang' by William Shakespeare read by A. Morrison (1H)
9. D. Cain (1H) reads his own poem 'Sea Anemone'
10. Three poems called 'Death'  
read by the writers: D. Thompson }  
D. Collison 1R }  
R. Rickard }
11. 'The Lobster Quadrille' by Lewis Carroll read by R. Moonilall  
with other members of 1S
12. Flute Solo: Two Minuets by Bach played by Miles
13. 'Naming of Parts' by Henry Reed read by M. Mayer (3H)
14. 'Like a Child' by Rod McKuen read by A. Sinfield (3H)
15. A. Kingham (3H) reads his own poem 'The Final Exit'
16. Four poems called 'Achilles'  
read by their writers: M. Pembroke }  
J. Offenbach } 1R  
G. Pascucci }  
P. Quak }
17. Cello Solo: 'Merry Dance' played by Wharton (2H)
18. Taylor (1S) reads 'Winter' by M. Edie (1S)
19. M. Blencowe (1S) reads his own poem 'Winter'
20. M. Walters (1S) reads his own poem 'Changing Seasons'
21. Mozart Sonata in G for organ and two violins played by Taylor  
and Lubert
22. A Sequence of poems, "Dreams and Incantations" including extracts  
from Byron, Ben Jonson, George Peele, Shakespeare, Shelley, and  
Wallace Stevens - read by:  
M. Blencowe; D. Carlen; B. Dray; D. Hinkman;  
M. McDonsgh; J. Taylor (1S)  
C. Burgess; A. Gray; D. Highton; P. Horcraft;  
D. Jones; K. O'Driscoll (2R)  
R. Cansick; J. Copley; A. Fraser;  
D. Peine (3H)

The Musicians of St. Marylebone Grammar School  
offer you seasonal greetings and present their

### FINAL CHRISTMAS CONCERT

1980

7.30 p.m. Tuesday 16th December

1. Opener Christmas Carol Medley
2. Piano Sleigh Ride (Leroy Anderson)
3. Orchestra Hark! the herald angels sing
4. Orchestra Christmas Waltz Medley I
5. Oboe Aria in G. (Telemann)
6. Trumpet Trumpet Voluntary (Boyce)
7. Violin Rondo in G (Mozart)
8. Clarinet Allegro and Rondo (LeFebvre)
9. Trumpets Duo in G (Clodionir)
10. Trio Allégro for Flute, Violin, Cello (Schnitt)
11. Orchestra Christmas Waltz Medley II
12. Two Pianos Jannicalypso (Arthur Benjamin)
13. Brass Hawai Pivo-o
14. Brass "New World" Largo (Dvorak)
15. Item Meditation
16. Carols  
(i) Good King Wenceslas  
(ii) Once in royal David's city  
(iii) While shepherds watched their flocks  
Audolph, the red-nosed reindeer (J.Marks)
17. Orchestra Sebastian's Shampoo Saloon
18. Item Nola (Arndt)
19. Piano Duet Twelve Days of Christmas (Daiches)
20. Reading Little Donkey
21. Orchestra O little town of Bethlehem
22. Carol Dance of the Doll (Shostakovitch)
23. Piano Rock around the Christmas Tree (J.Marks)
24. Orchestra Binoculars, please!
25. Item Happy Christmas (John Lennon)
26. Tribute O come all ye faithful
27. Carol White Christmas
28. Orchestra

Christmas Carol  
Programme -  
the final one  
before the  
school's closure

Despite strong opposition from governors, parents, supporters and students, **St Marylebone Grammar School closed in 1981** after a long period of uncertainty shaped by national changes in education policy.

**Yet the story did not end there.** The spirit of SMGS has endured beyond its closure: the Old Philologians continue to come together, **sustaining the memories, friendships and shared identity** which defined the school for generations. Their stories are kept alive also by their careful preservation of the items and photos central to their memories, including items on display.

In 1983, Forest Green Camp was transferred to William Ellis School and renamed the St Marylebone Camp. Now known as “The Mill,” it **remains in active use by schools and youth groups**, while also hosting an annual reunion of the Old Philologians.

